

# presentation PLUS

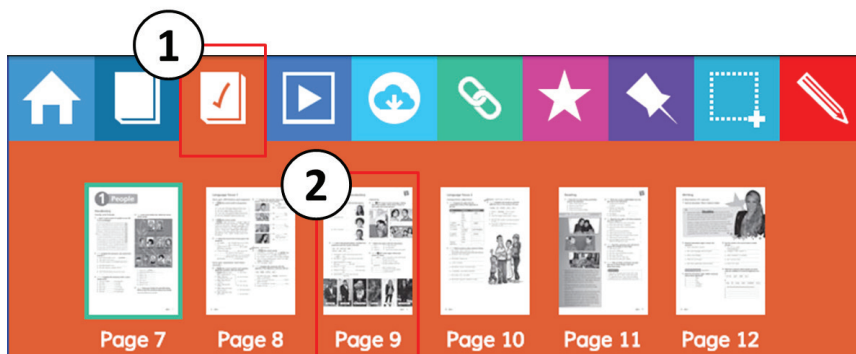
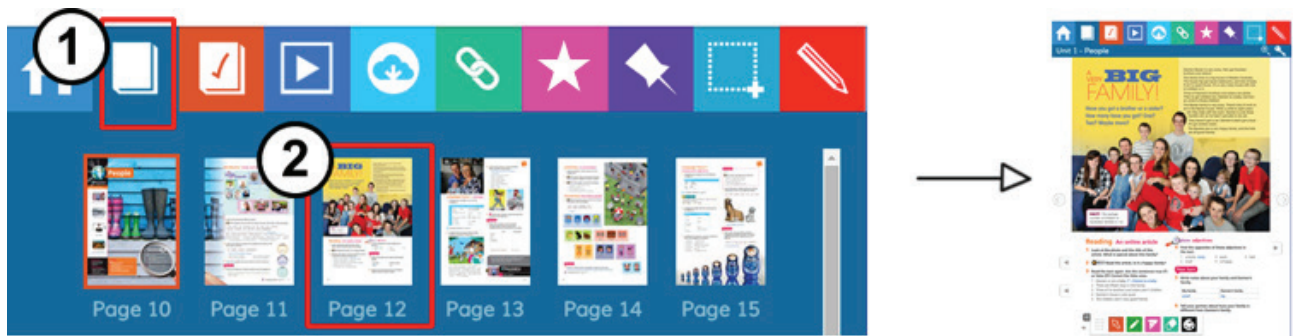
## Help Guide

### I. Coursebook content

#### I.1 Unit selection



#### I.2 Page selection

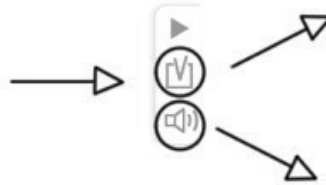


## 1.3 Interactive exercises and audio

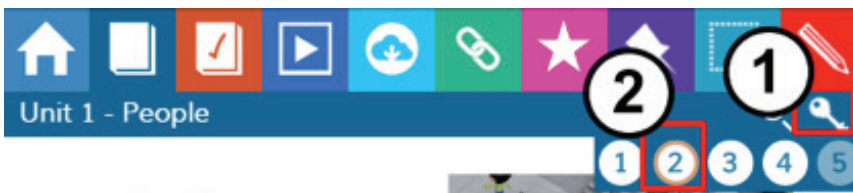


### Listening A conversation

- 1 Look at the picture. What things have the avatars got?
- 2 Listen to the conversation between Connor and Suzi. Which is Connor's avatar?



## 1.4 Answer keys (For teachers)



### Listening A conversation

- 1 Look at the picture. What things have the avatars got?
- 2 Listen to the conversation between Connor and Suzi. Which is Connor's avatar?
- 3 Listen again. Correct the sentences.
  - 1 The game is called 'My 3D house'.
  - 2 Connor is on level 15.
  - 3 Connor has got ten stars.
  - 4 Suzi's avatar has got a blue skateboard.

### Vocabulary Describing people

- 4 Choose the correct words from the list. Then listen, check and repeat.

funny brown intelligent short blue straight good-looking old

1 straight

### Exercise 2

Connor's avatar has got a blue skateboard and spiky blue hair.

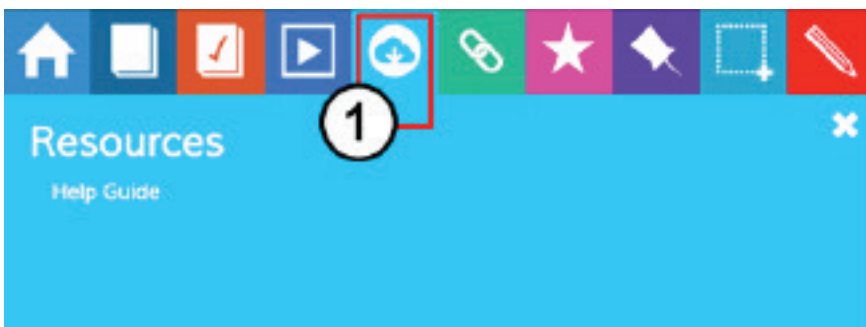


Show all Last Item Next Item

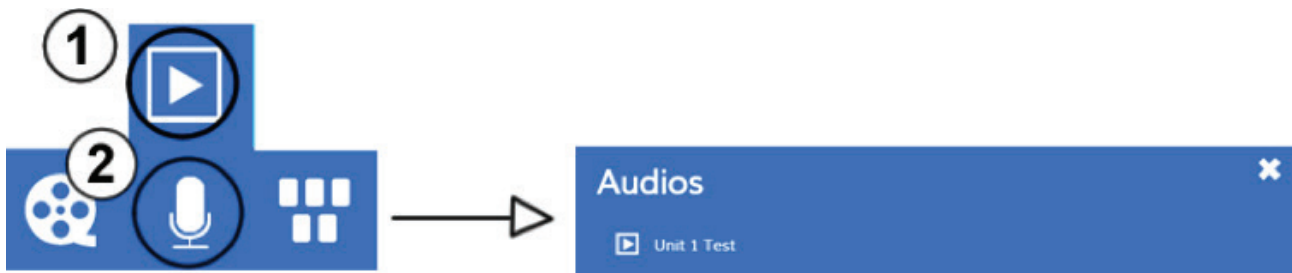
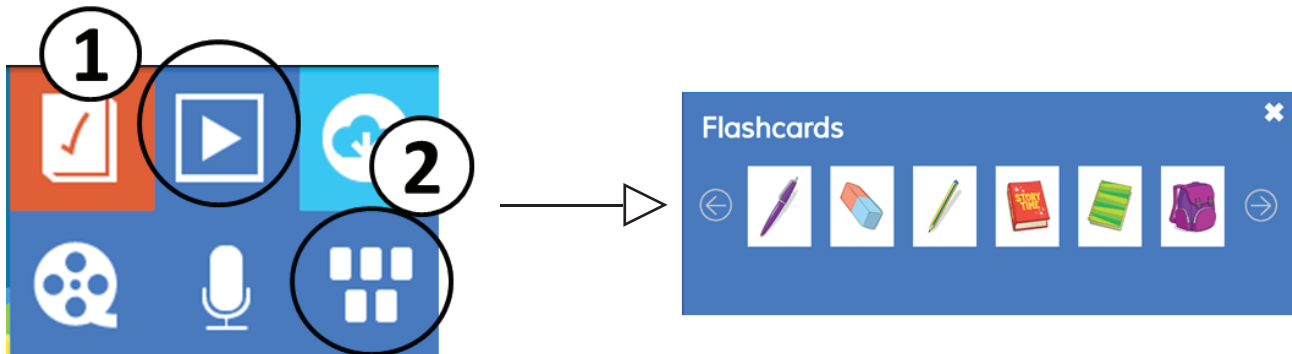
3

## 2. Resources

### 2.1 Print resources

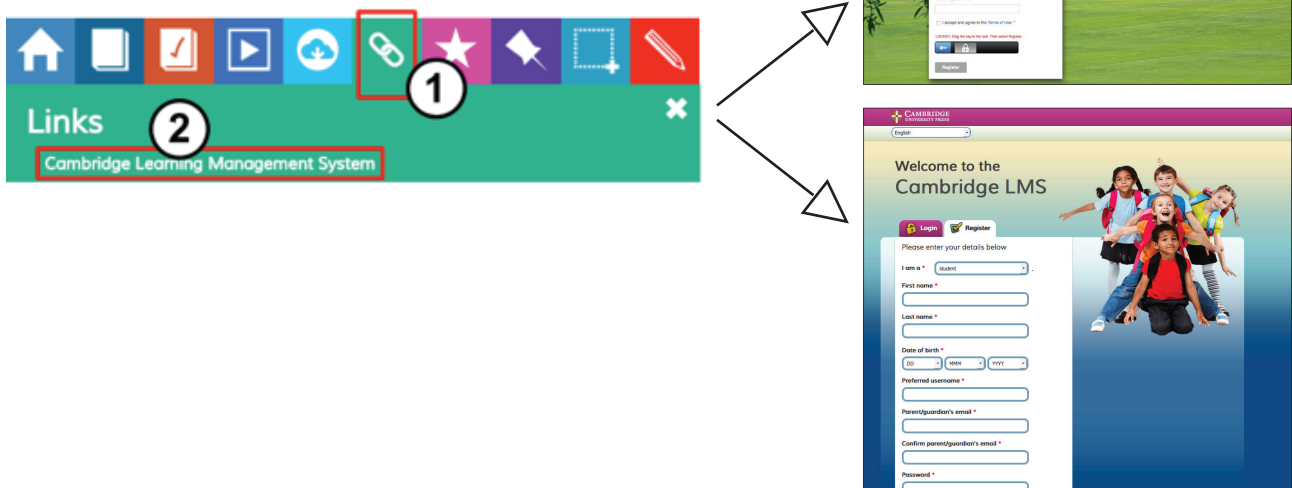


## 2.2 Media library



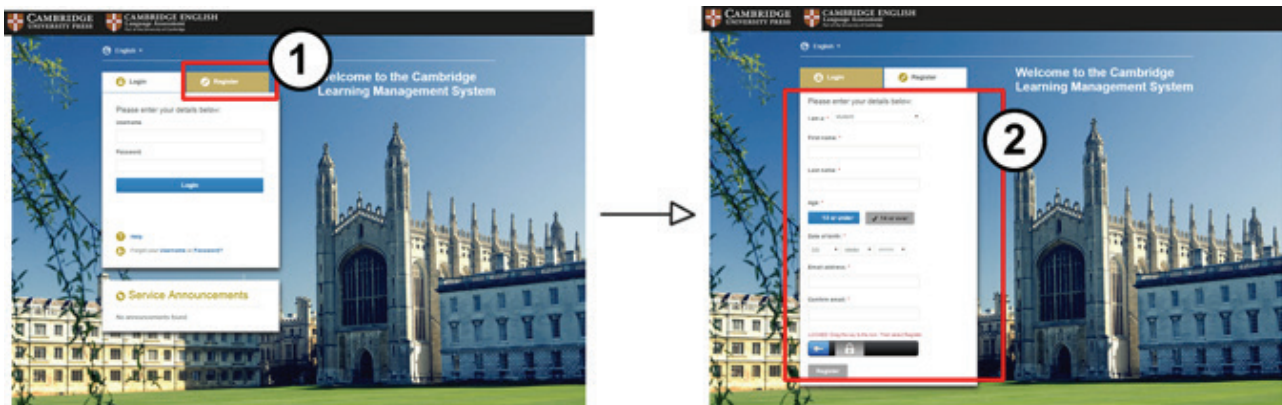
## 3. Online activities

Presentation Plus has a link to the Cambridge LMS.



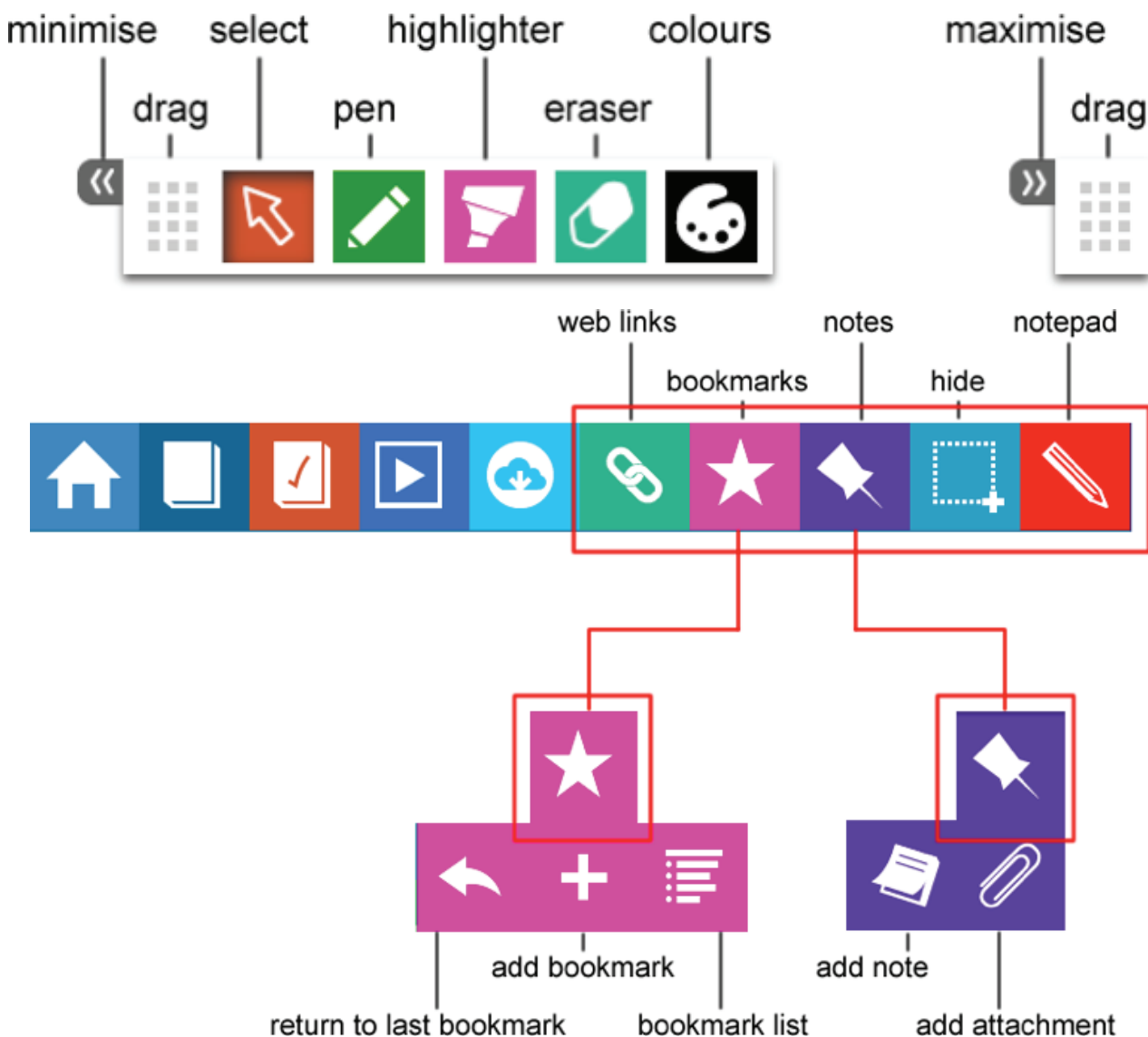
In the LMS there are extra activities and resources for students and teachers. For teachers only, there is a free training course about using technology.

To access the LMS, you need an internet connection and you have to register. You will receive further instructions when you register.

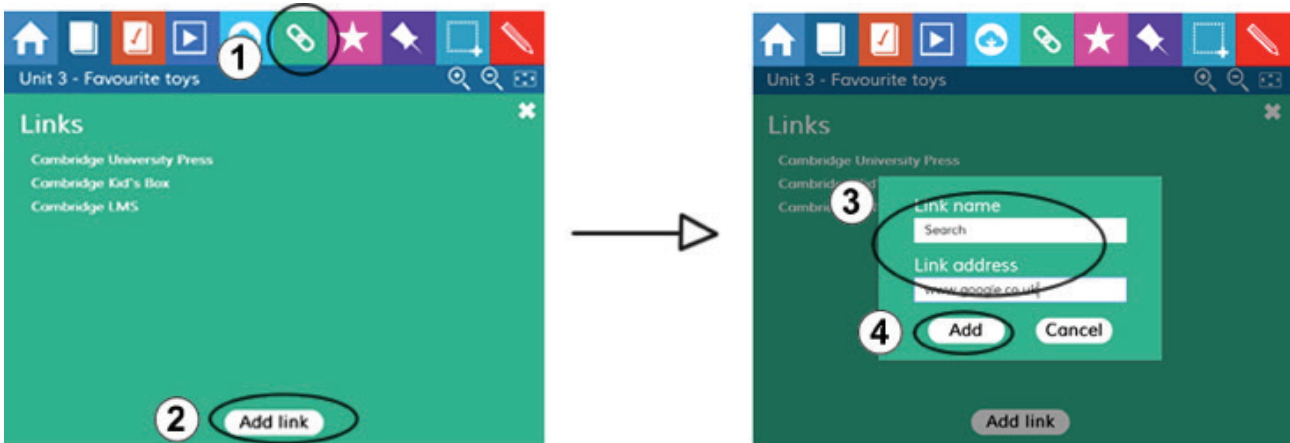


## 4. Tools

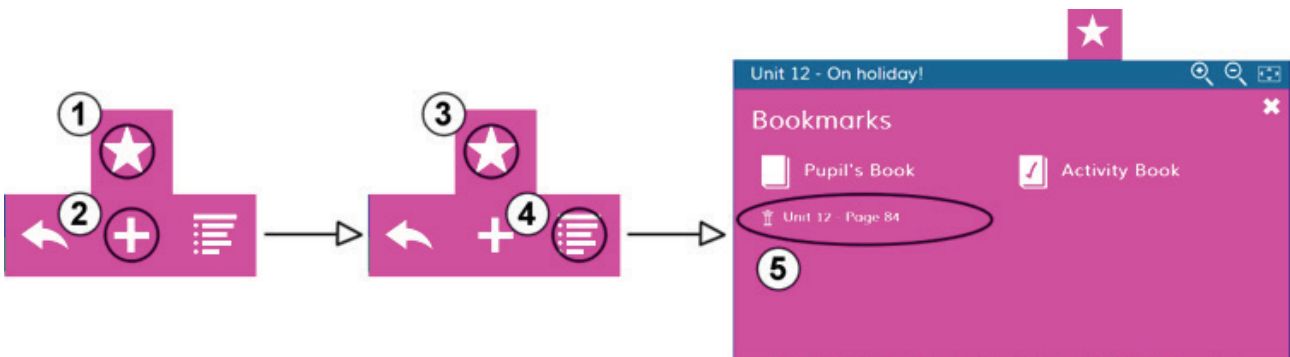
### 4.1 Tools overview



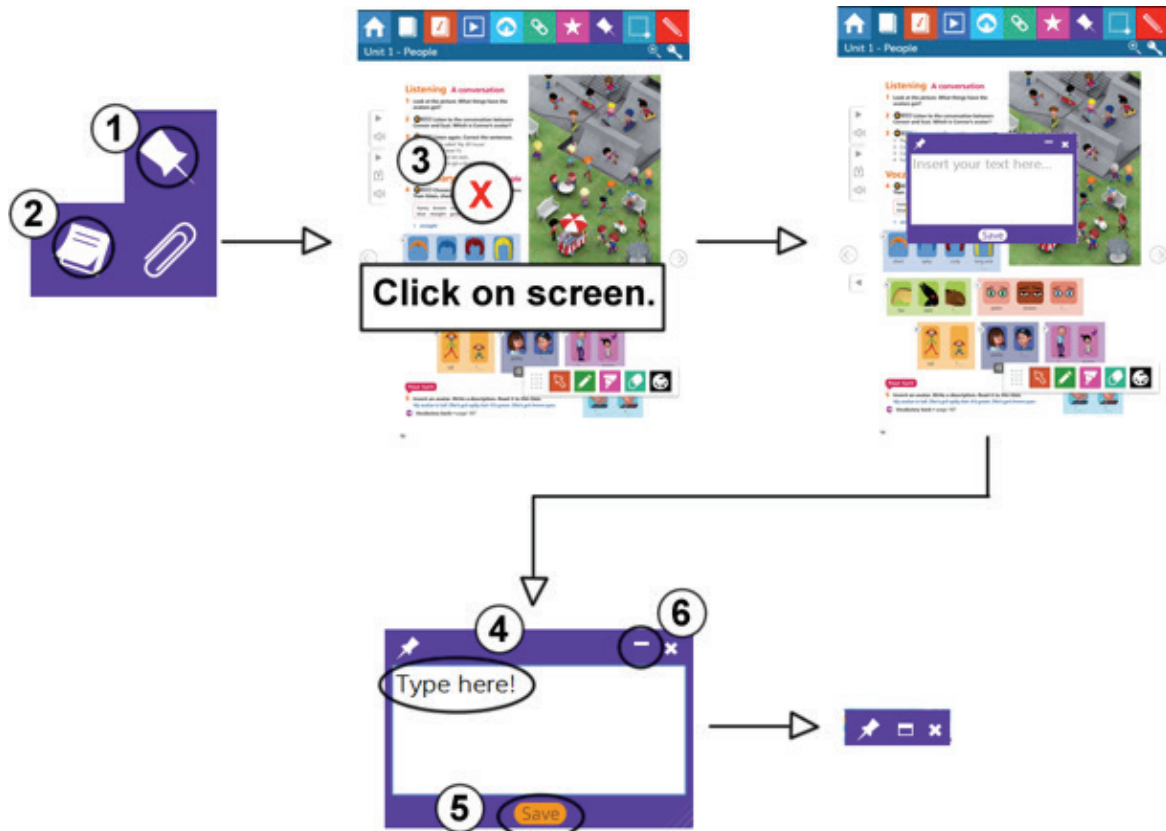
## 4.2 Adding web links



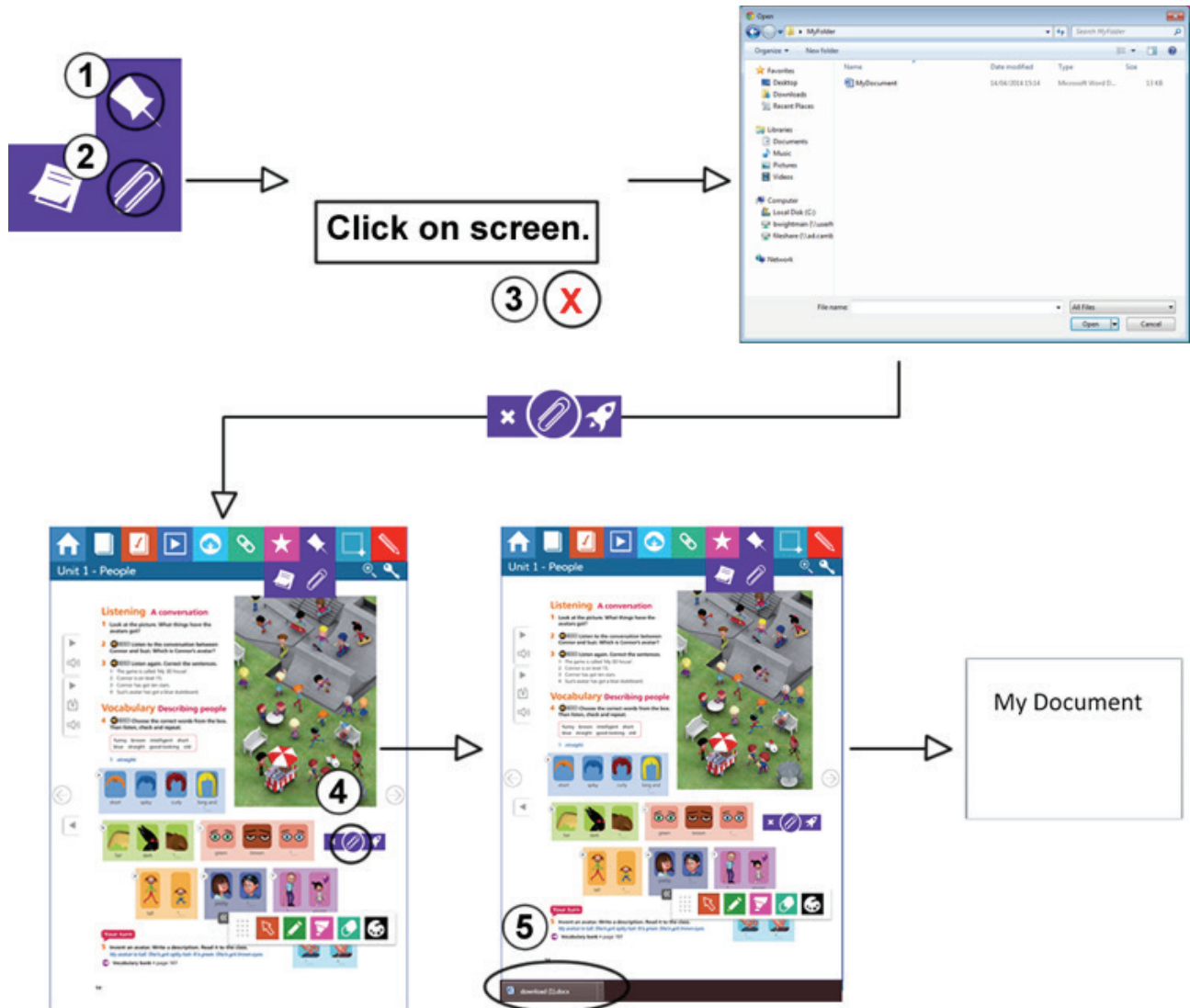
## 4.3 Using bookmarks



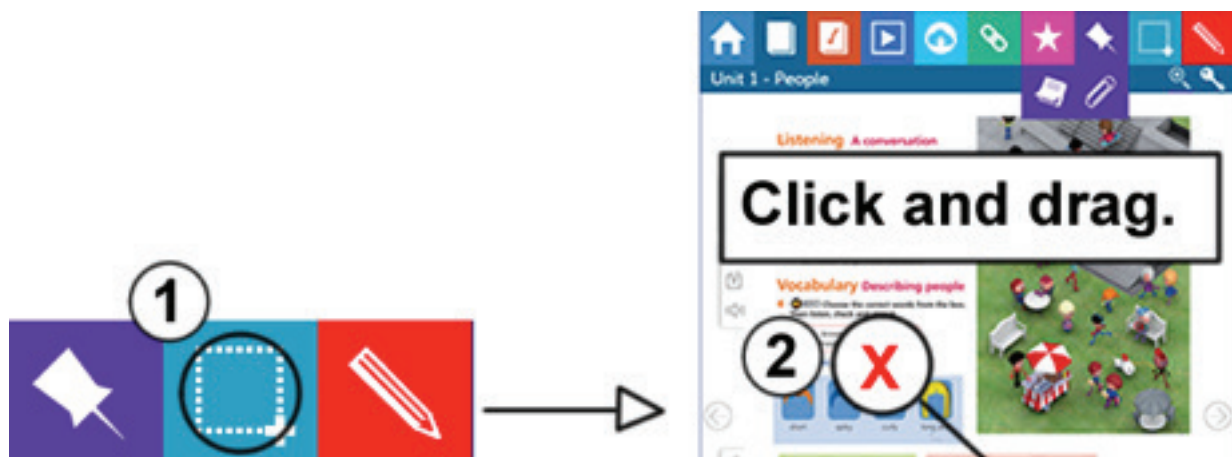
## 4.4 Adding notes



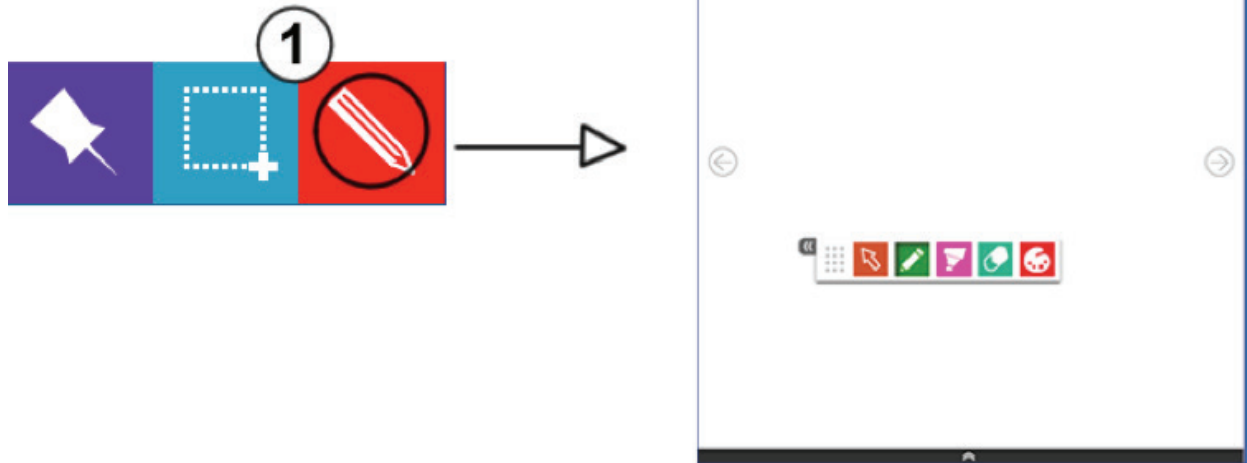
## 4.5 Adding attachments (not available on tablet devices)



## 4.6 Hiding and revealing



## 4.7 Opening the notepad



For technical support enquiries please contact [lms.support@cambridge.org](mailto:lms.support@cambridge.org)