

4

Teacher's notes

Reinforcement worksheet 1

- Pupils cover the bottom half of the page with their exercise books. They look at the outlines and guess what each object is. Then they uncover the page and use a pencil to follow the dotted lines going from each object to its partner in the scene. They colour in the objects, using one colour for each. When pupils have finished colouring in the toys, do a class survey of which colours were used for which object, e.g. *Hands up if your robot is brown!* and count the number of pupils. Pupils then colour the rest of the scene.
- **Optional follow-up activity:** Alternatively, pupils use modelling putty to make a ball and a robot. They describe what they have made, e.g. *a yellow and brown ball.*
- **Optional audio activity:** Alternatively, pupils follow the dotted lines as the objects are named in the audio (Track 14). Make sure they are all pointing at the right object before they colour them in (with colours of their choice).

Key: bike, doll, car, ball, robot, kite.

Reinforcement worksheet 2

- Copy onto thin card for best results. Do a colour dictation. Ask pupils to look at the spinner and say *Colour the robot yellow*, etc. (see Key below). Continue until pupils have coloured each object correctly.
- Pupils cut out the spinner. Help them push a pencil through the centre. They spin the spinner six times, colouring each numbered section of the kite the colour of the toy that the spinner lands on. E.g. if with the first spin the spinner lands on the car, which is red, they colour section 1 of the kite red, etc. Display the kites. Pupils choose their favourite.
- **Optional follow-up activity:** Decide on an action for each toy, e.g. bouncing the ball, rocking the doll. Pupils work in pairs, A and B. Pupil A spins the spinner and Pupil B does the action. Pupils A and B exchange roles.
- **Optional audio activity:** Pupils listen to the audio (Track 15) and lay that side of the spinner on the desk. Check pupils' answers.

Key: a red car, a yellow robot, a black ball, a blue bike, a brown doll.

Extension worksheet 1

- Pupils colour the scene and the objects. They cut out the objects and use sticky tape on one back edge of each to attach it face down on the scene, wherever they choose, so that the objects are not visible but the pictures can be viewed when lifted.
- Pupils work in pairs, A and B. Pupil A asks Pupil B about his/her own picture saying, e.g. *Where are the pencil and book?* Pupil B lifts a flap and says *They're here* or *They aren't here* depending on where they have stuck their pictures.
- **Optional follow-up activity:** Use toy flashcards. One pupil leaves the room or closes his/her eyes while you place the flashcard somewhere round the room (partly visible). He/she must then find it. As a clue, you and the rest of the pupils must name the object repeatedly, speaking more loudly as the pupil approaches the flashcard and more quietly as he/she moves away.

Extension worksheet 2

- Pupils cut out the frames from the story and place them on a strip of A3 paper in the order they remember. Pupils listen to the story (Track 16) and check their answers. Finally, pupils stick the frames onto the strip in the correct order and colour them in.

Key: 1 F, 2 E, 3 A, 4 C, 5 D, 6 B.

- **Optional follow-up activity:** Say a line from the story to the class. Ask *Monty? Marie? Maskman?* The first student to raise their hand and say which character says the line takes the next turn to say a line.

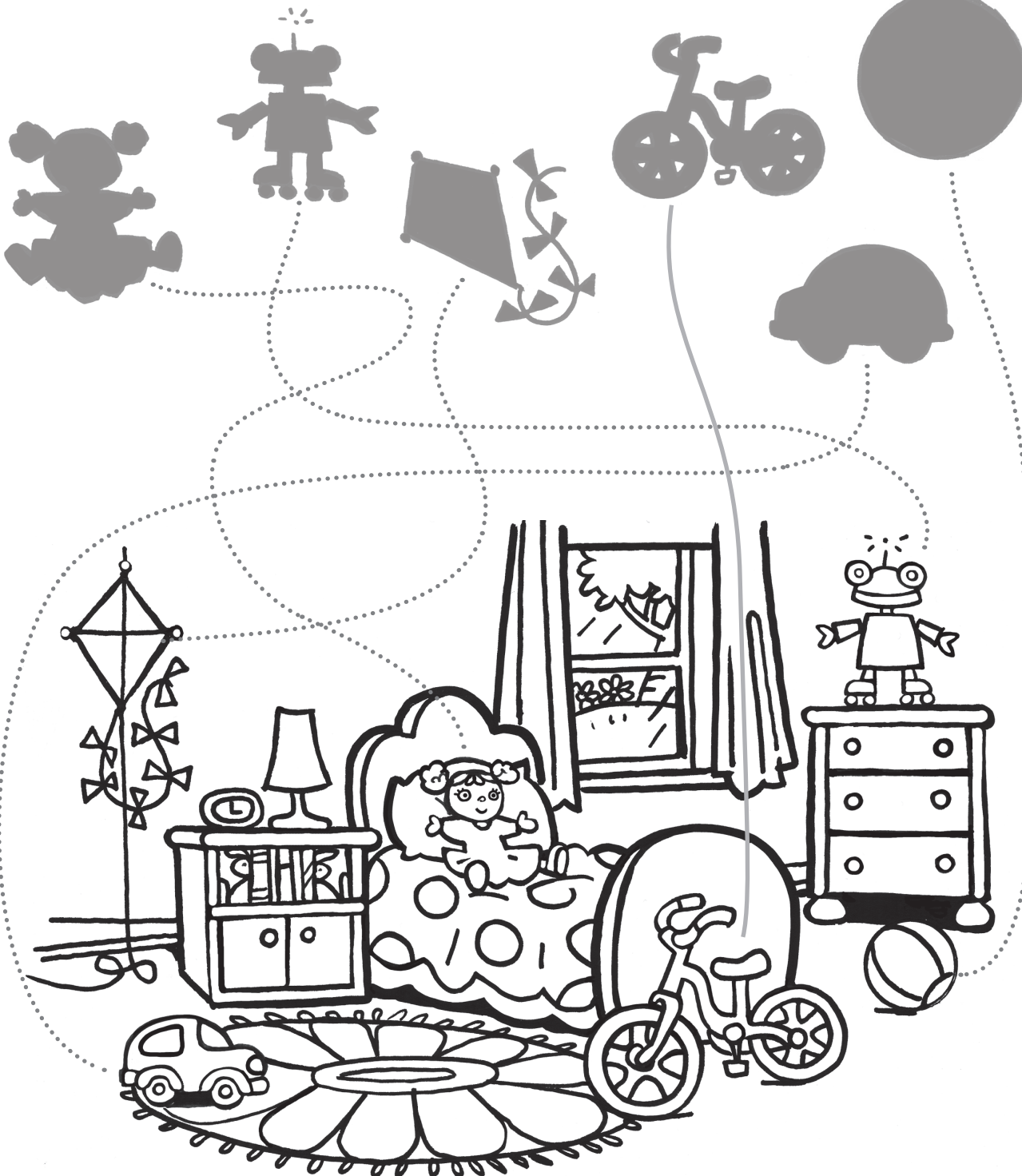
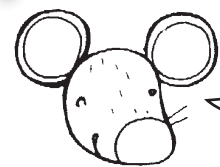
Song worksheet

- Pupils colour the pictures and cut out the two strips. Help them to cut out the shaded areas in the bottom strip then fold along the lines. They insert the strip with the toys (from the left) and ask, e.g. *Where's my car?* They push the strip to reveal the car and answer *It's here! It's here!* Play the song (Track 17). Pupils sing while they do this again to reveal the doll and the kite.
- **Optional follow-up activity:** Divide the class into two teams. Show pupils the toy flashcards before fixing them face down on the board. Ask *Where's the robot?* A pupil from each team touches the flashcard and says *It's here!* Turn it over to check. Continue with the other toys.

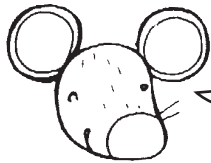
Reinforcement worksheet 1



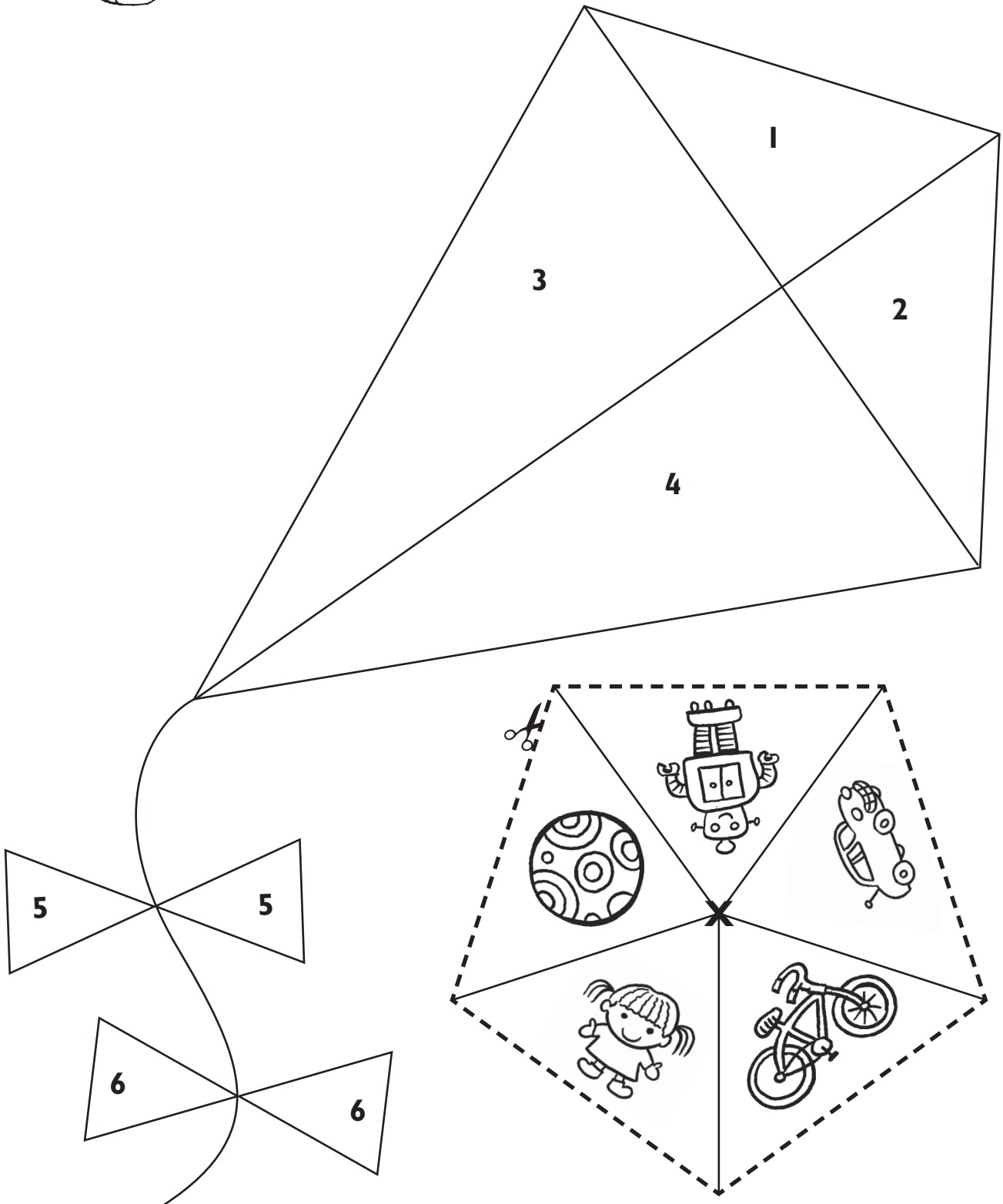
Follow the lines and colour.



Reinforcement worksheet 2



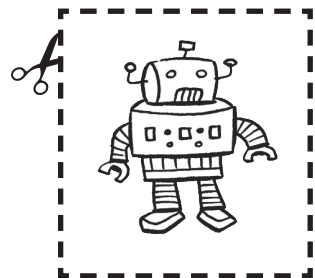
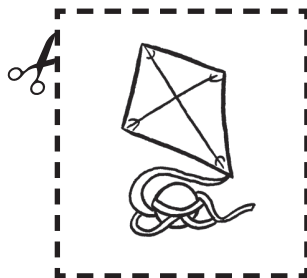
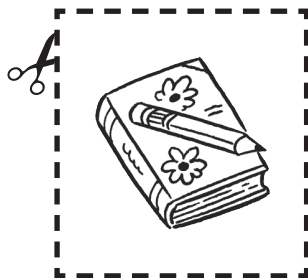
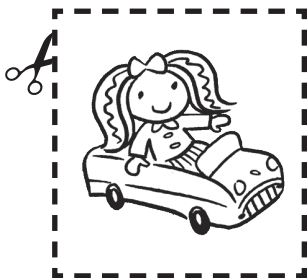
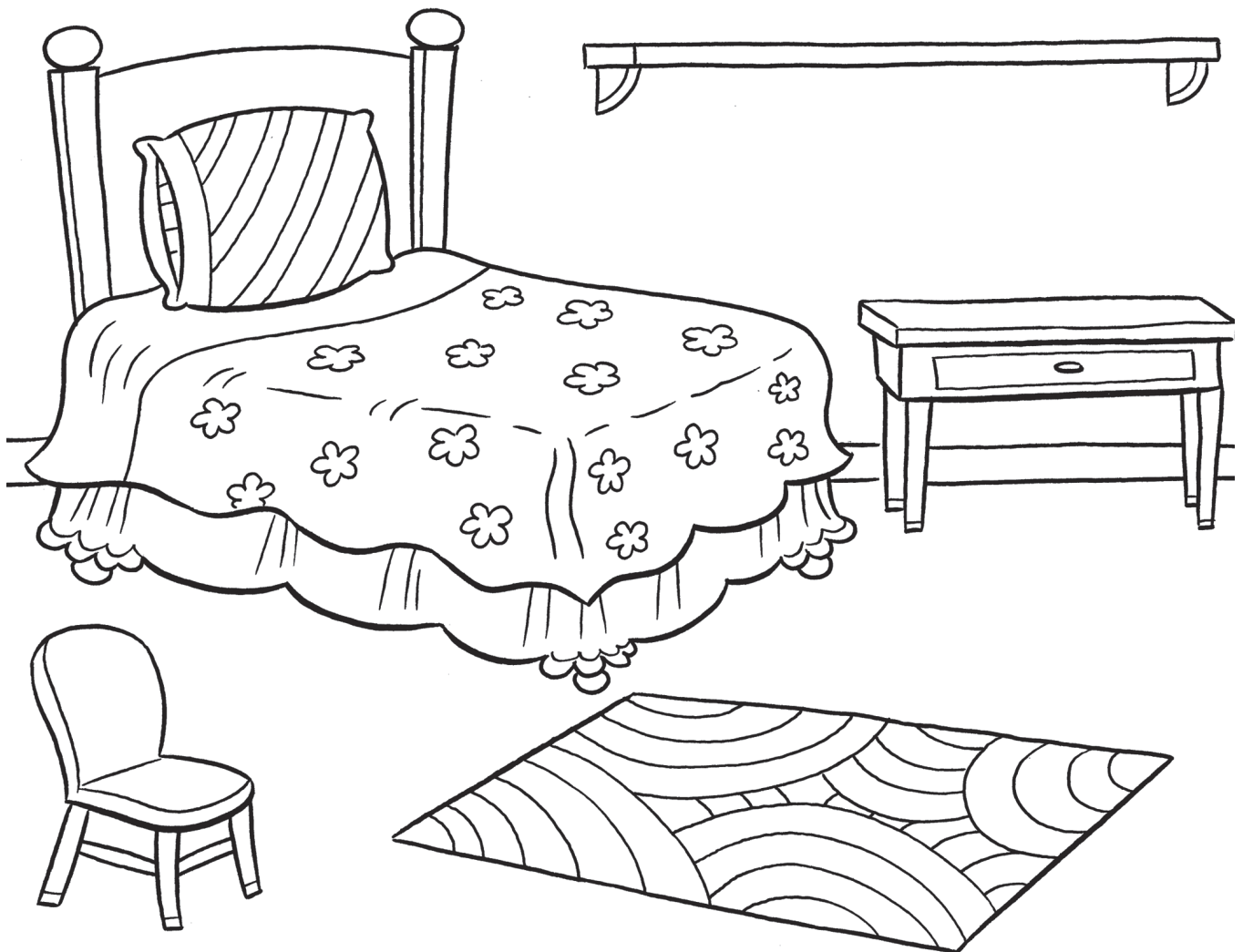
Make, play and colour.



Extension worksheet 1



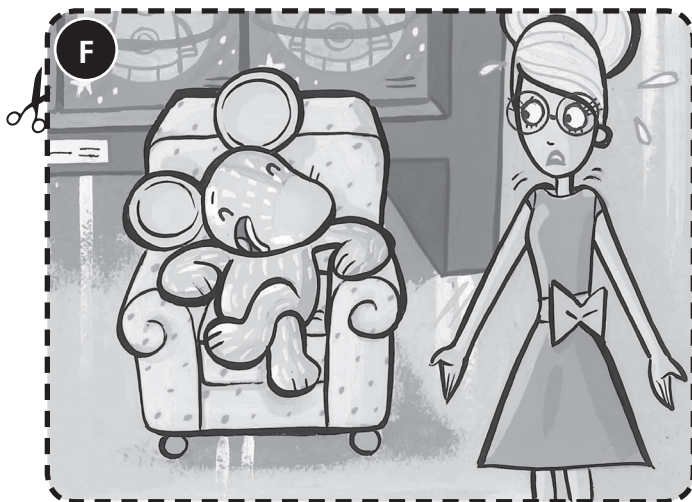
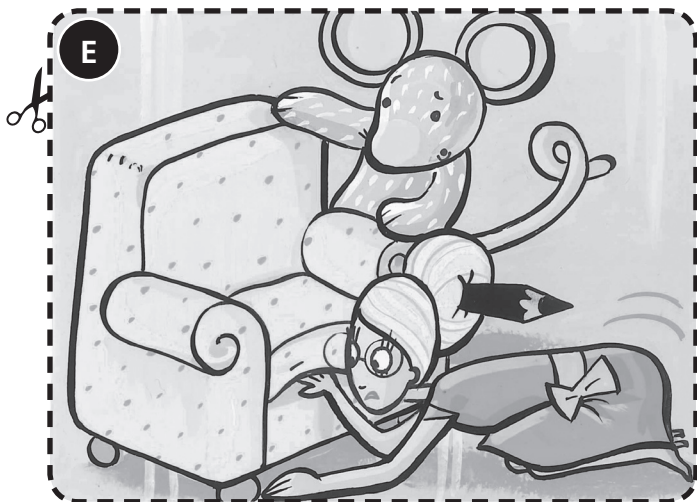
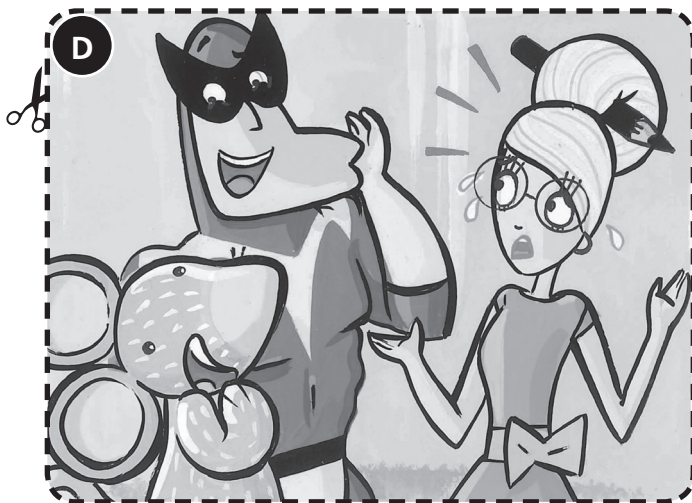
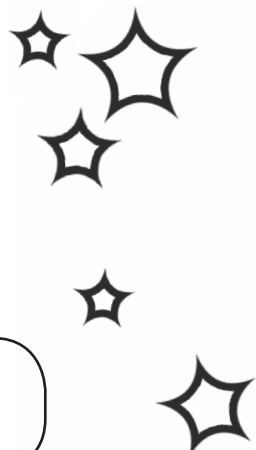
Cut, place and play.



Extension worksheet 2



Cut and order. Listen.



Song worksheet



Make and play. Sing.

